

# ARLU

## Invisible Hinges



**Windsor** ARCHITECTURAL  
HARDWARE

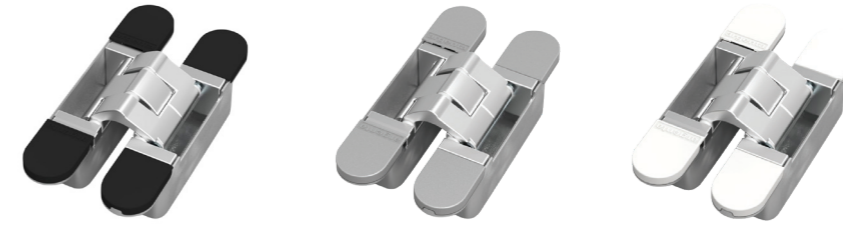


## Invisible Hinges

Invisible Hinges are completely unseen when the door is closed and an architecturally designed look when the door is open.



## Invisible Hinges



### Invisible PRO

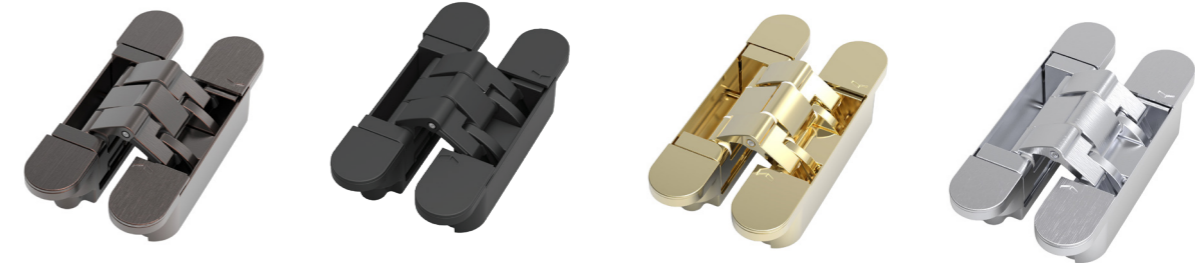
#### 9810 XS-4

Min Door Thickness 28mm

Up to 50kg doors

- > Simplified adjustability (height and width)
- > Compact dimensions: only 23mm built-in depth

Finishes:



### Invisible NEO

#### 9811 Invisible NEO S-5 (pic)

Min. Door Thickness 33mm

Up to 80kg doors

- > 3D adjustability (height, width, and depth) without taking the door off
- > Extra simplified height adjustment: no wedge required

Finishes:



#### 9812 Invisible NEO M-6

Min. Door Thickness 36mm

Up to 100kg doors

#### Features and Benefits

- > Universal: for left and right-opening doors
- > 180° opening angle
- > "Easy-hook": installation and adjustment by one person
- > Open and shutting movement cycle tests (min. 200,000)
- > No visible screws
- > Can also be used with a steel or stainless steel door frame

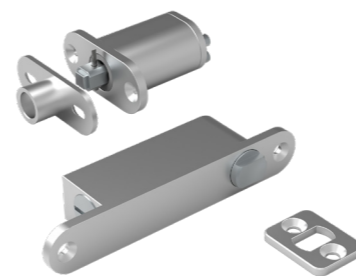


## Pivot Hinges

Pivot Hinges can be fitted either centrally, off-centre, or at the corner of the door using spaces and walls artistically to create a flush look with no door frame needed.



## Pivot Hinges



### Pivotica

#### 9800

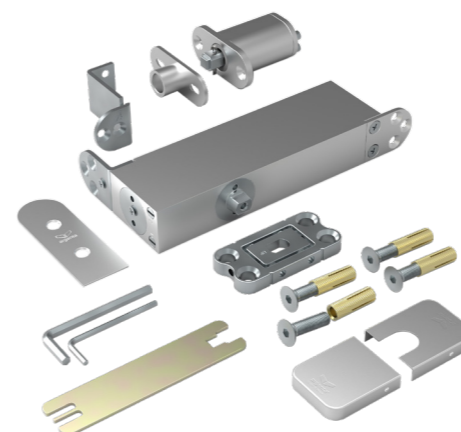
Spring Loaded

Fixed Positions: Closed, 45° & 90°

20–60kg door

- > Pivot system to be mounted in the doorpanel and not in the floor or ceiling

Finishes:



### Pivotica Pro

#### 9801 100 - F90 (pic)

Hydraulic Spring

Fixed Positions: Closed & 90°

Up to 100kg door

- > Adjustable bottom plate

#### 9805 150 - F90

Hydraulic Spring

Fixed Positions: Closed & 90°

Up to 150kg door

#### 9803 Pivotica Pro 100 Cover Plates

#### 9807 Pivotica Pro 150 Cover Plates

- > Designed for use with Pivotica Pro

Finishes:



#### 9804 Built-in Floor Mount

- > Designed for use with 9801 Pivotica Pro

Finishes:



#### Features and Benefits

- > Easy surface mounted or built-in installation
- > Opening angle in both directions up to 150°
- > Fixed settings at 90° in both directions
- > Free choice of rotating position (hinge point)
- > Child-friendly (easy to open)
- > Available for floor-to-ceiling-height doors
- > Safe for underfloor heating applications (when floor-mounted)
- > Suitable for both left and right doors
- > All part of the hinge is rust-resistant
- > Adjustable bottom plate
- > Invisible door closer



# Technical Information

## Invisible Hinges

Weight Table			
Hinge Type	Invisible PRO XS-4		
Number of Hinges	2	3	
Max. door weight according to door width	730mm	50kg	65kg
	830mm	45kg	60kg
	930mm	40kg	55kg
	1030mm	35kg	50kg

Hinge Type	Invisible NEO S-5		Invisible NEO M-6	
Number of Hinges	2	3	2	3
Max. door weight according to door width	730mm	75kg	95kg	115kg
	830mm	70kg	90kg	110kg
	930mm	65kg	85kg	105kg
	1030mm	60kg	80kg	100kg

Technical Features	
Hinge Type	Invisible Pro XS-4
Door thickness	min. 28mm
Overall depth	23mm (frame) / 23mm (door)
Dimensions (L x W)	100mm x 20mm
Height adjustment	-2.5 / +2.5mm
Width adjustment	-2.0 / +2.0mm

Hinge Type	Invisible NEO S-5	Invisible NEO M-6
Door thickness	min. 33mm	min. 36mm
Overall depth	26.5mm (frame) / 30mm (door)	30mm (frame) / 32mm (door)
Dimensions (L x W)	120mm x 25mm	140mm x 28mm
Height adjustment	-2.5 / +2.5mm	-3.0 / +3.0mm
Width adjustment	-3.0 / +4.0mm	-3.0 / +4.0mm

- > **AB** Antique Bronze
- > **BLK** Matt Black
- > **PB** Polished Brass
- > **SS** Stainless Steel
- > **SVPR** Silver Pearl
- > **WHT** White

## Pivot Hinges

Technical Features		
Hinge Type	Pivotica	Pivotica Pro
Material	Aluminium & Stainless Steel	Aluminium & Stainless Steel
Door thickness	min. 40mm	min. 40mm
Door weight	60kg	max. 150kg
Door width	1500mm	2000mm*
Door height	3000mm	3000mm
Height adjustment	n/a	-3 / +3mm (Adjustable bottom plate)
Width adjustment	n/a	-3 / +3mm (Adjustable bottom plate)
Alignment	n/a	-4 / +4° (Adjustable bottom plate)

\* = Central position of the hinge



PIVOTICA PRO (FLOOR MOUNTED)

OR



PIVOTICA PRO (BUILT IN)

PIVOTICA PRO (FLOOR MOUNTED)



PIVOTICA PRO (BUILT IN)

OR

0800 607 028

[sales@windsorhardware.co.nz](mailto:sales@windsorhardware.co.nz)  
[windsorhardware.co.nz](http://windsorhardware.co.nz)



**Windsor**  
ARCHITECTURALHARDWARE